



IMPLEMENTATION OF SAMOA PATHWAY

TONGA'S EXPERIENCES

**Presented by: Ms. Ma'u Leha, SAMOA Pathway Focal Point,
Prime Minister's Office,
OCTOBER 29, 2018**



Outline

- ▶ Tonga's Experiences
- ▶ Key Challenges & Opportunities
- ▶ Means of Implementation
- ▶ Emerging Priorities

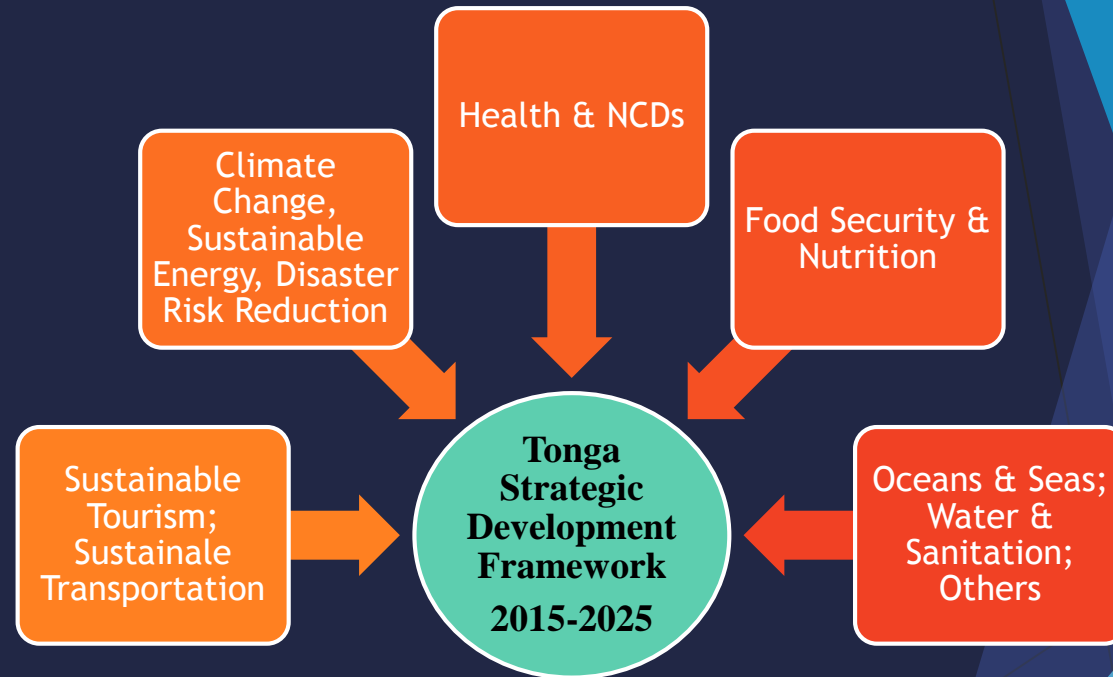
EXPERIENCES IN IMPLEMENTATION OF SAMOA PATHWAY



Lessons Learnt

- ▶ Country ownership of SAMOA Pathway
- ▶ Strengthen whole of society approaches
- ▶ Strengthen monitoring & evaluation
- ▶ Effective **integration of sector & community development plan priorities** into the corporate planning process
- ▶ **Effective coordination** of collaborations amongst line ministries and stakeholders

Best Practices



KEY CHALLENGES & OPPORTUNITIES



▶ Challenges:

- ▶ Data
- ▶ Effective coordination mechanisms
- ▶ Implementation
- ▶ Mainstreaming process
- ▶ Prioritization and phasing processes



▶ Opportunities:

- ▶ Closer collaborations with the Tonga Bureau of Statistics
- ▶ Mainstream SAMOA Pathway through the National Planning process including corporate planning & budgeting
- ▶ Implementation of Sector Plans Priorities
- ▶ National Monitoring System

MEANS OF IMPLEMENTATION



- ▶ Genuine and durable partnership
- ▶ National development strategies implementation
- ▶ “Strike the balance” - corporate plan & budget
 - ▶ financing
- ▶ Technology
- ▶ Strengthening of existing national systems
- ▶ Data & Statistics

EMERGING PRIORITIES



- ▶ **Sector Plans:**
 - ▶ Access to justice, rule of law and good governance
 - ▶ Education sector
- ▶ Centralized e-government information system
- ▶ Effective **integration of sector & community development plan priorities** into the corporate planning process
- ▶ **Effective coordination** of collaborations amongst line ministries and stakeholders
- ▶ **Universal Health Coverage** especially to the remote and outer islands
- ▶ Educational programs especially **vocational and special educations**
- ▶ **Improved law & order and domestic security appropriately applied**
- ▶ Accelerate getting the Renewable Energy target set: **% of Renewable Energy Generation: to be 50% of the power needs of the Tongan Consumers.**
 - ▶ **Affordable energy**

MALO 'AUPITO

